

# POLECAM

World Leader in Specialty Jibs, Minicams & Accessories



# IK-HR1S

ULTRA COMPACT HD-SDI  
1080i/720p HI-DEF CAMERA



## Features

- Ultra compact (approx 1.75" x 1.75" x 3") one-piece system
- Output selectable between 1080i and 720p at 50 or 60 Hz Video
- Utilizes 1/3" CMOS 2.1 megapixel sensor
- On-screen menu
- Weighs only 4.3 oz. (without lens)
- HD-SDI Video Output
- Auto and manual white balance
- Auto and manual electronic shutter
- C-mount lens ready

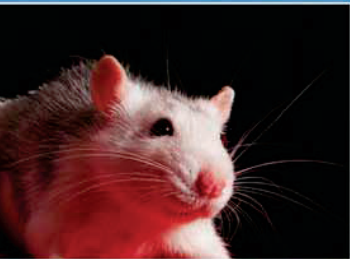
## Applications

- Broadcast
  - sports, entertainment, wildlife, reality TV, head-cam, news-copter
- Scientific imaging /diagnostics
- Homeland security

## One-Piece 1080i/720p High Definition Camera.

Toshiba's new IK-HR1S color camera provides incredible high definition video with the flexibility of switchable 1080i or 720p output. This compact, one-piece camera is ideal for high speed and broadcast imaging, producing little or no motion artifacts. From land, air or sea, let Toshiba bring your project to HD life.

**TOSHIBA**  
Leading Innovation >>>



## IK-HR1S

1080i / 720p SWITCHABLE  
Hi-Def CAMERA

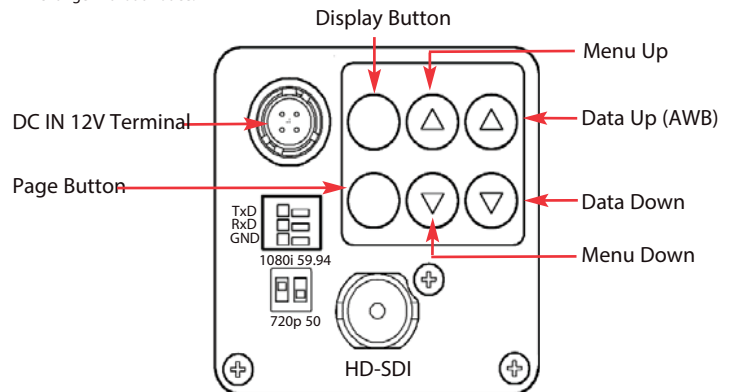
### PERFORMANCE SPECIFICATIONS

Power Requirements	12 VDC $\pm$ 10% DCIN connector (4pin)
Power Consumption	Approx. 4 watts
Image Sensor	1/3" progressive scan CMOS
Output Pixels	Horizontal: 1920, Vertical: 1080
Scanning System	Progressive (720p)/Interlaced (1080i) Switchable
Sync / Freq	720p @ 60 fps; 1080i @ 30 fps H: 33.716 kHz, V: 59.94 Hz (1080/59.94i setting) H: 28.125 kHz, V: 50 Hz (1080/50i setting) H: 44.955 kHz, V: 59.94 Hz (720/59.94p setting) H: 37.500 kHz, V: 50 Hz (720/50p setting)
Sensitivity	f/4 standard (2000 lux, 3000K)
Min. Illumination	8 lux standard (50 IRE, f1.4, gain + 18 dB)
Frame Rate	30 fps (1080i), 60 fps (720p)
Video Signal Output	HD-SDI (SMPTE292M), 0.8 V (p-p) standard 75 ohms unbalanced BNC connector
Sync. System	Internal
Dimensions	1.75" x 1.75" x 3.0625"
Weight	4.3 oz.
Operating Temperature	0°C to + 40°C
Storage Temperature	-20°C to + 60°C
Humidity	90% or less (non-condensing)

### SPECIFICATION - FEATURES

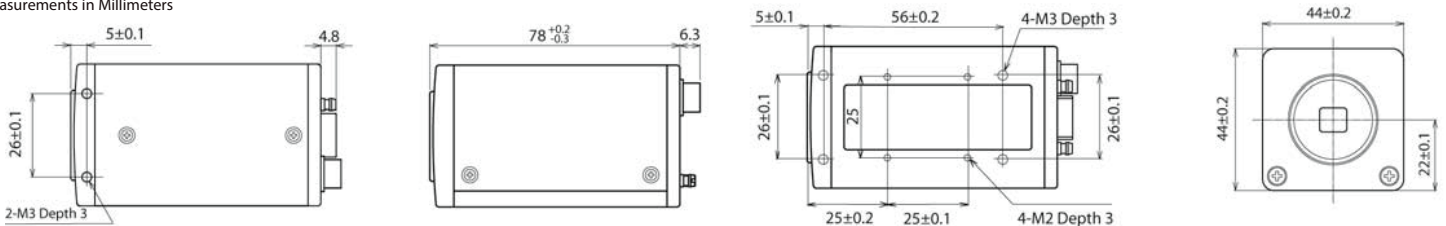
Shutter	Manual – Off (1/60s), 1/100s, 1/125s, 1/250s, 1/500s, 1/1000s, 1/2000s, 1/4000s Auto Level – range of -100 to 100 Synchronized Scan – Set by horizontal scanning time
Gain	MANUAL (manual), OFF (0dB)
White Balance	AWB (Automatic White Balance) ATW (Automatic Tracking White Balance) Manual (Manually Adjustable)
Gamma	OFF / MANUAL : 0 to 18dB (1dB/step)
Scene File Setting	5 Files A/B/C/D/E
Remote Control	RS-232C: Baud rate 9600bps/19200bps

Design and specifications are subject to change without notice.



### DIMENSIONS

Measurements in Millimeters



### CONNECTIONS FOR DIGITAL MONITORING/RECORDING

